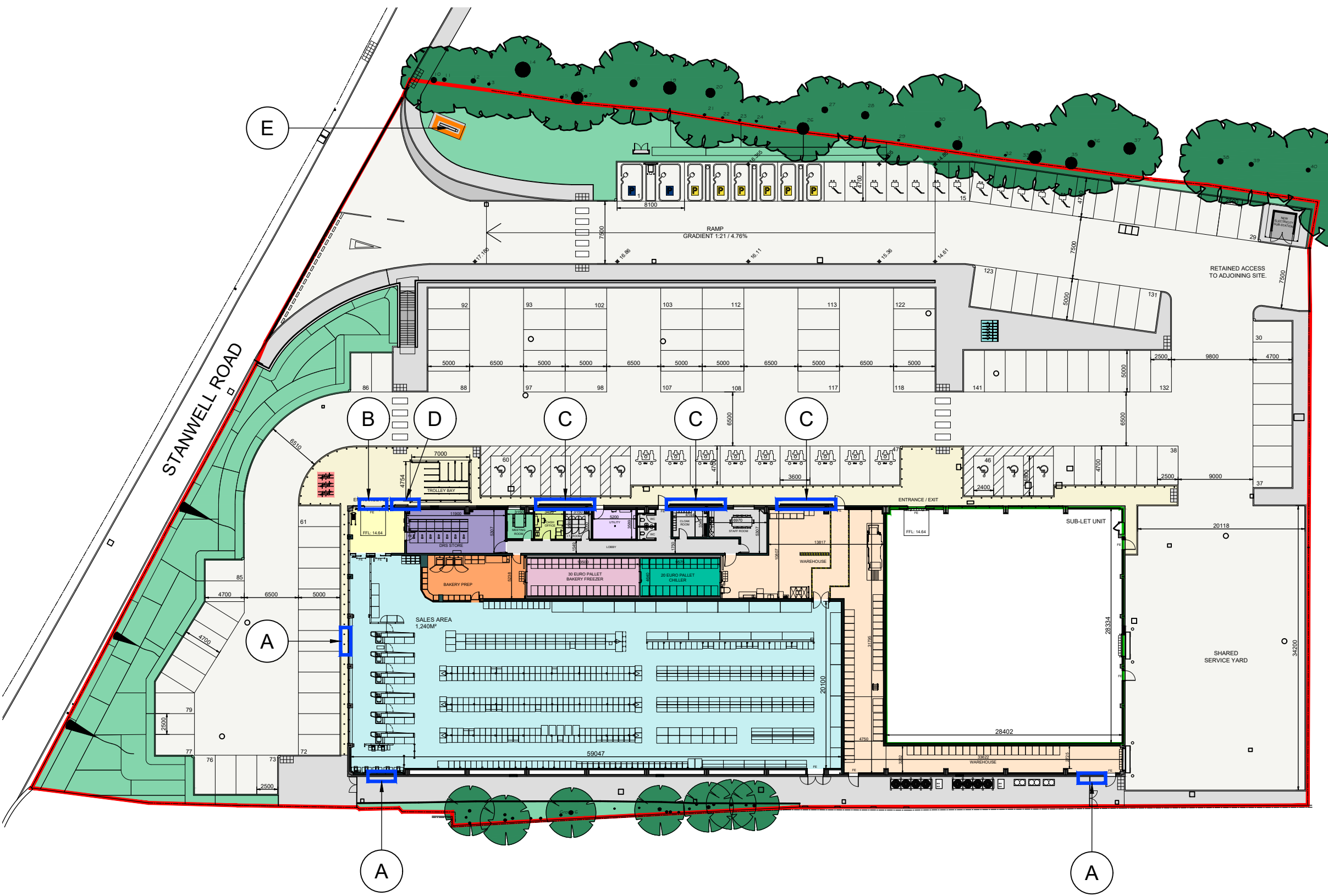


Rev	Date	Reference	Drawn / Chk'd
P04	2022/10/05	SIGNAGE LOCATION 'E' UPDATED.	AA AA

SCHEDULE OF ACCOMMODATION - KEY

- Site Boundary 1.076ha (2.658 acres)
- Approved Sign Locations
Refer to approved drawings 4415-1000, 1001 and 1002 for details (20/00764/ADV).
- Proposed Sign Location
Refer to drawing 4415-1002 P03 for details.



Client _____

Lidl Great Britain Ltd

Project _____

Lidl
Stanwell Road, Ashford

Title _____

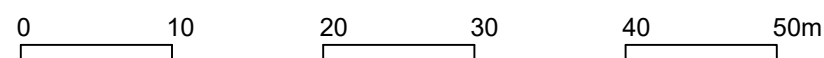
Signage Location Plan

Drawing Ref. _____ Revision _____

4415-1003

P04

Scale - unless otherwise stated Status Issued For
1:500 @ A3 S0 Preliminary



KLH architects
 The Old Steelyard, Poplar Lane
 Sprooughton, Ipswich, IP8 3HL
 t.01473 689532
 klh@klharchitects.com
 www.klharchitects.com